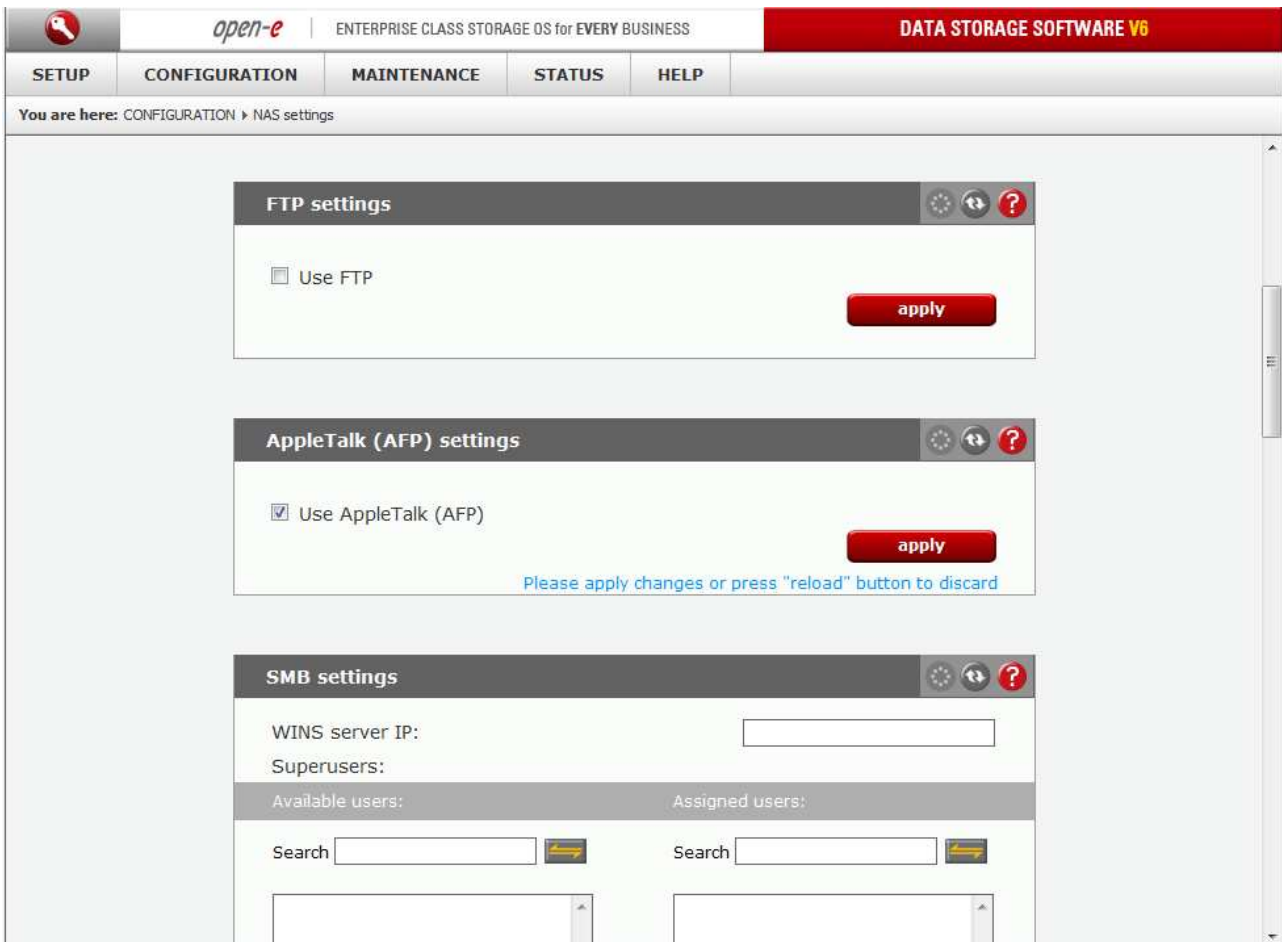


## Open-E DSS V6 as backup device for Apple's Time Machine®

Time Machine® is backup software developed by Apple® Inc. and was first implemented as part of Mac OS® 10.5 (Leopard®). It creates incremental backups of system volume as well as other files - i.e.: photos, movies, music etc. In this article we will focus on configuring the Open-E DSS V6 as an external storage of Time Machine® backups. Let's start:

First we need the latest version of Open-E DSS V6, 6.0up85. This release introduces support for the new release of Mac OS® X 10.7 (codename Lion®) - as well as Time Machine® support. When the 6.0up85 version is running, we need to create a Volume Group (VG) and NAS Logical Volume. For the next step we need to enable AFP functionality under the *WebGUI > CONFIGURATION > NAS settings > AppleTalk (AFP) settings*.

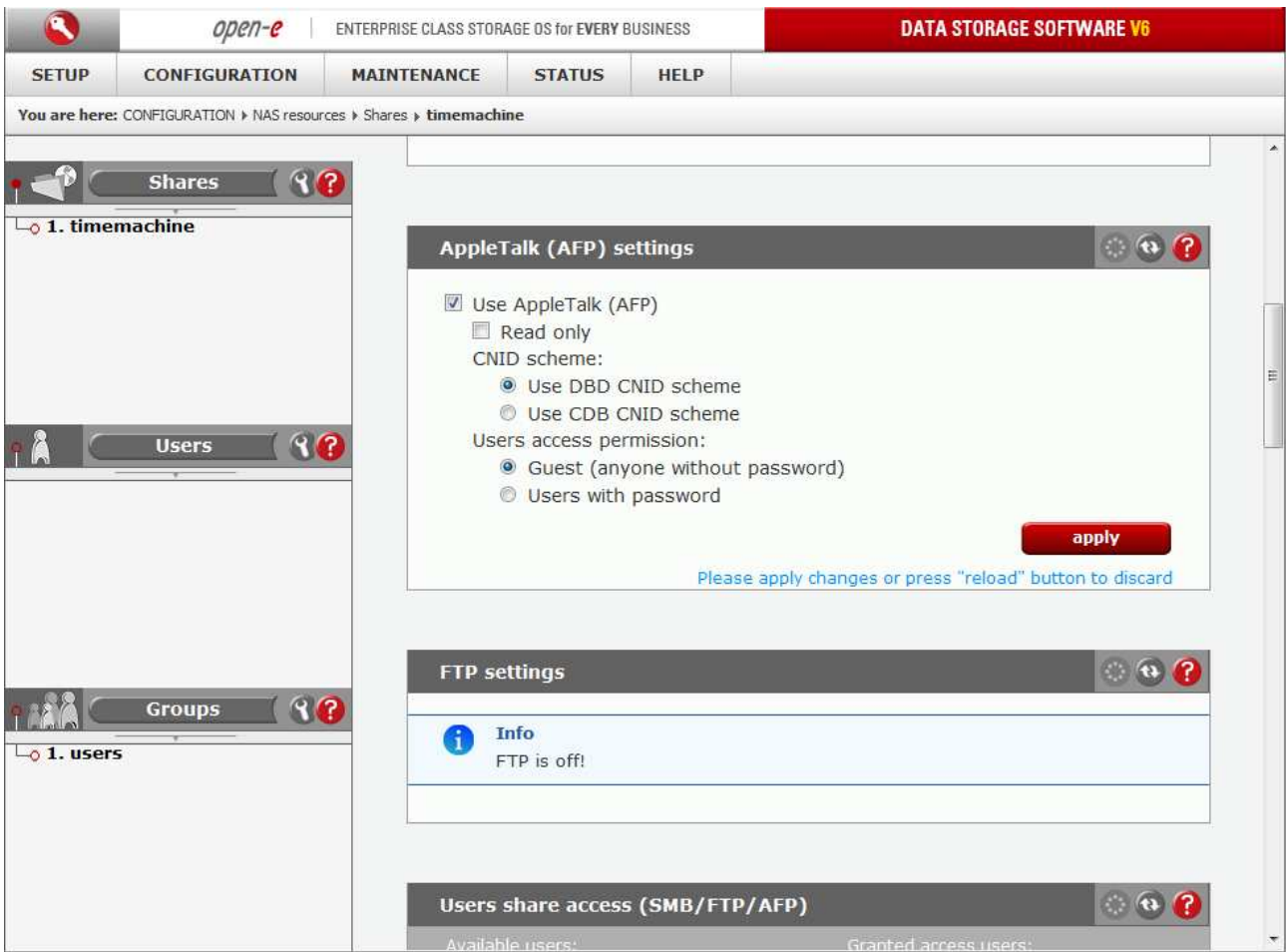


The screenshot displays the Open-E DSS V6 WebGUI interface. The top navigation bar includes a logo, the text "open-e | ENTERPRISE CLASS STORAGE OS for EVERY BUSINESS", and a red header "DATA STORAGE SOFTWARE V6". Below this is a menu with "SETUP", "CONFIGURATION", "MAINTENANCE", "STATUS", and "HELP". A breadcrumb trail reads "You are here: CONFIGURATION > NAS settings".

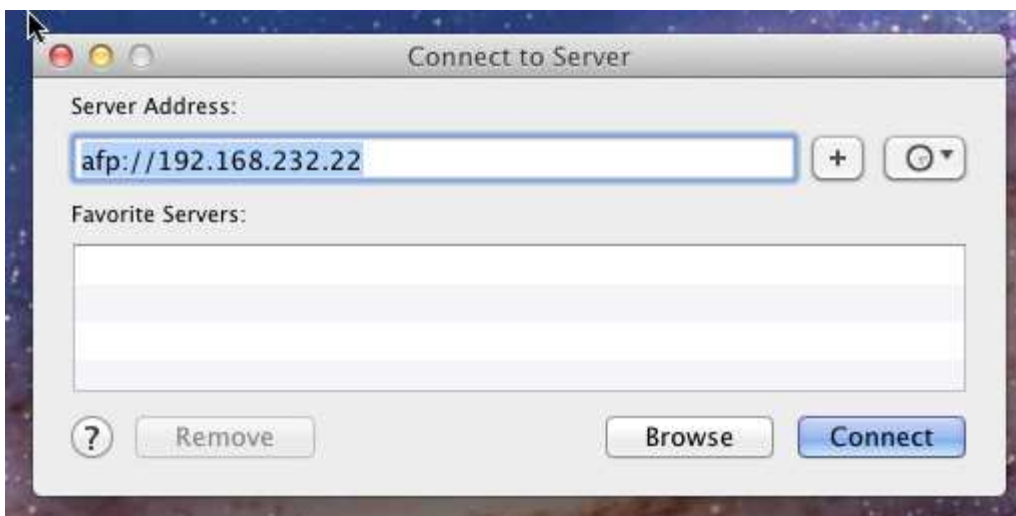
The main content area features three configuration panels, each with a title bar containing refresh, back, and help icons:

- FTP settings:** Contains a checkbox for "Use FTP" which is currently unchecked. An "apply" button is located at the bottom right.
- AppleTalk (AFP) settings:** Contains a checkbox for "Use AppleTalk (AFP)" which is checked. An "apply" button is at the bottom right. Below the button, a blue message states: "Please apply changes or press 'reload' button to discard".
- SMB settings:** Includes a "WINS server IP:" field, a "Superusers:" field, and two sections: "Available users:" and "Assigned users:". Each section has a "Search" input field and a right-pointing arrow button.

Now it is time to create a share on the NAS volume that will be used to store Time Machine® backup files and make it AFP enabled.



In this article we are using a guest profile (without a password) to access the share, but it is also possible to use it with a user's profile and a password authentication as well.



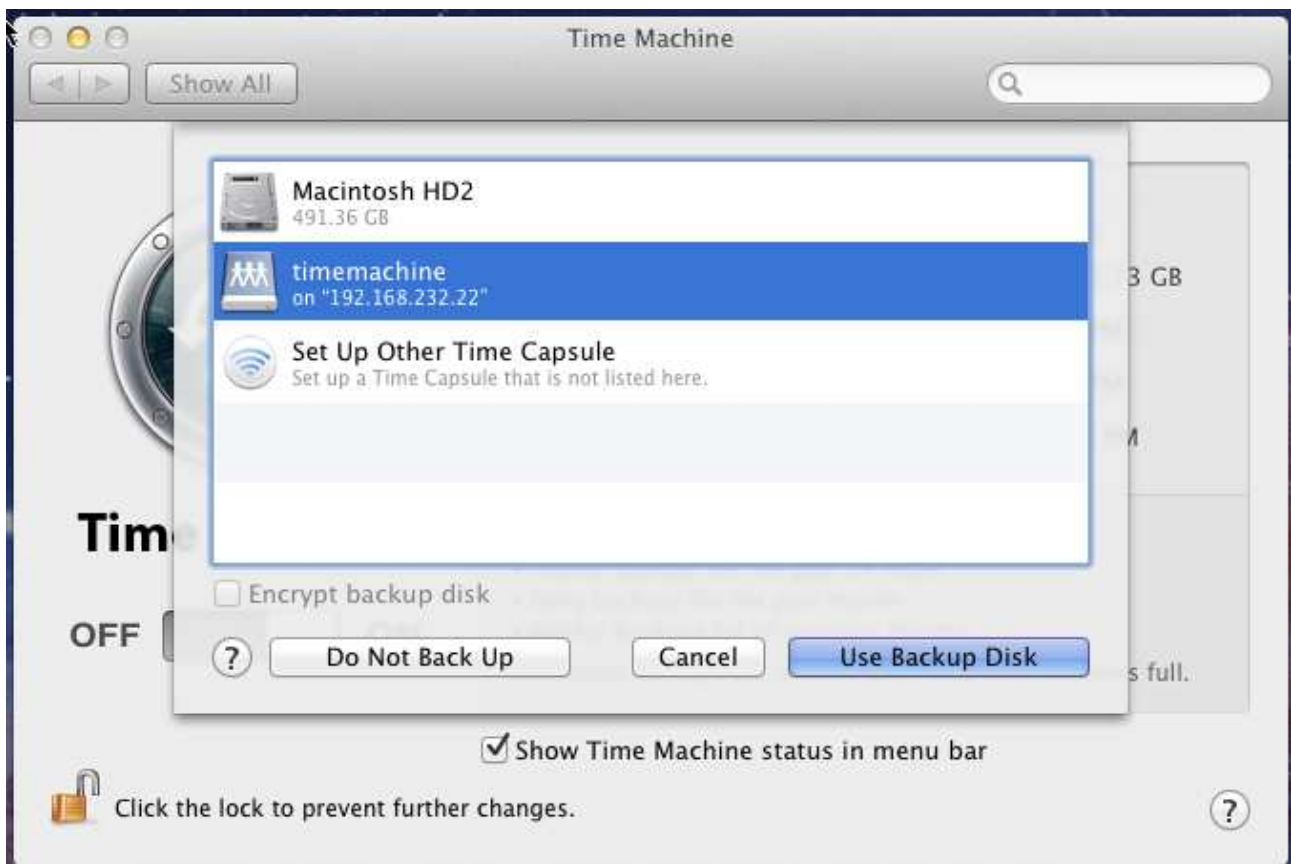
The next step is the configuration of the Mac OS® X server. By default it does not support any external NAS devices – i.e.: an external storage for Time Machine® - but it can easily be changed with just one simple command in the terminal:

```
defaults write com.apple.systempreferences TMShowUnsupportedNetworkVolumes 1
```

Now our Mac OS® X system is ready to configure the Time Machine® service. We need to connect to the AFP enabled share on the DSS V6.



After everything is done, we can open the Time Machine® configuration utility and select the share as backup disk.



That is all. After a short while you should see the first Time Machine® backup running.